

# STYLE SHEET

Audrey Hepburn  
In the 1960s.



Ace Hotel's  
Tokyobikes.

BICYCLES ARE CLEARLY THE FETISH OBJECT OF THE DECADE—TAKE, FOR

## PEDAL POWERED

EXAMPLE, THE NEW LE FLÂNEUR SPORTIF BY HERMÈS, WITH ITS



Hermès  
luxe  
wheels.

SADDLE, HANDLEBARS, AND CARRYING HANDLE ENCASED IN LUXE MATTE-BLACK CROCODILE (HERMES.COM). THE HIP ACE

HOTEL CHAIN HAS JOINED FORCES WITH JAPANESE BRAND TOKYOBIKE TO LAUNCH GUIDED TWO-WHEELED TOURS IN LONDON AND LOS ANGELES LED BY WRITERS, DESIGNERS, AND OTHER CREATIVE TYPES. PARTICIPANTS CAN BORROW—OR PURCHASE—ONE OF THE HOTEL'S NEW ONE-SPEED TOKYOBIKE CRUISERS (ACEHOTEL.COM). EVEN THE PROSAIC BICYCLE CHAIN HAS BEEN RECAST BY ME&RO INTO A SLINKY BRACELET AND RING OF 18-KARAT GOLD (MEANDROJEWELRY.COM).

Me&Ro's  
bike chain  
jewelry.



Nicolou  
sunglasses.

## EYE CANDY

Years before he painted his first soup can, Andy Warhol was a commercial illustrator, drawing shoes, hats, flowers, cosmetics, and cats, often in his signature "blotted line" technique. Now Italian eyewear company Retrosuperfuture has teamed with the Andy Warhol Foundation to produce a quartet of chic sunglasses based on one of the artist's illustrations from 1957. The four styles have appropriately Warholian names—Babybaby, Ultracandy, Velvetdarling, and Nicolou—and look like they'd be perfectly at home beneath a white fright wig (momastore.org).



Detail of Andy  
Warhol's 1957  
illustration.



## ARTFUL ACCESSORY

Before it even opened, Renzo Piano's new building for the Whitney Museum of American Art, a nine-story structure of asymmetrically stacked glass and steel, below, became a hot spot for stylistas. So it's not surprising that the structure has already generated its own fashion statement. Italy's Max Mara has collaborated with the architect's studio on the Whitney Bag, above, an elegantly geometric tote with distinctive ribbing that recalls the steel tie-beamed exterior of the building. All of its metal details, including its snap hook and zipper pull, are based on structural metal components of the museum. And the icy, light blue-gray leather used for the limited-edition bag evokes the color of the building's enameled-steel panels (maxmara.com).

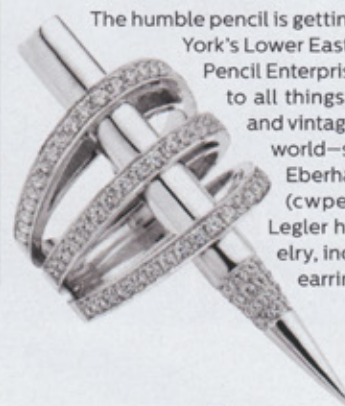


CW Pencil  
Enterprise.



## DRAW FORTH

The humble pencil is getting a haute makeover. New York's Lower East Side is now home to CW Pencil Enterprise, a stylish shop devoted to all things graphite, including new and vintage pencils from around the world—such as the much-coveted Eberhard Faber Blackwing 602s (cwpencils.com). And Brady Legler has created pencil-inspired jewelry, including gem-encrusted dangling earrings (bradylegler.com).



Pencil Jewelry  
by Brady Legler.

